

# Sulfur Analysis with Unprecedented Precision

From ultra low sulfur diesel and gasoline, to heavy fuel oil and crudes, Sindie® 7039 Gen 3 delivers improved precision and accuracy. Sindie 7039 is the ideal analytical solution for the refining industry where detection, performance and reliability are critical.

## Applications

- Total sulfur analysis from ultra low sulfur fuels to crudes
- For use in refinery labs, pipeline terminals, additive plants, testing vans and inspection laboratories

## Features and Benefits

- LOD: 0.15 ppm at 300 s
- Dynamic Range: 0.15 ppm - 3000 ppm
- Use Accucells for hassle-free sample prep
- Easy to use
  - Intuitive touch screen
  - Just plug-in and measure
  - Measurement time: 30-900 s
- Extremely low maintenance: no conversion gasses, heating elements, columns, or quartz tubing
- 75 W air-cooled excitation tube
- Fits on any lab bench

## Options

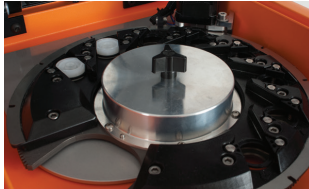
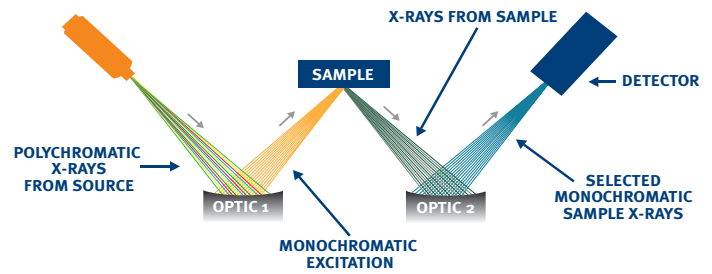
- Extended Range (XR): 0.3 wt% - 10 wt%
- 8-cell Autosampler
- LIMS data output compatible software

16 32.06  
**Sindie** 7039  
Sulfur Analyzer



## TRUSTED PRECISION

Monochromatic Wavelength Dispersive X-ray Fluorescence (MWDXRF<sup>®</sup>) utilizes state-of-the-art focusing and monochromating optics to increase excitation intensity and dramatically improve signal-to-background over high power traditional WDXRF instruments. This enables significantly improved detection limits and precision, and a reduced sensitivity to matrix effects. A monochromatic and focused primary beam excites the sample and secondary characteristic fluorescence X-rays are emitted from the sample. A second monochromating optic selects the sulfur characteristic X-rays and directs these X-rays to the detector. MWDXRF is a direct measurement technique and does not require consumable gasses or sample conversion.



### AUTOSAMPLER

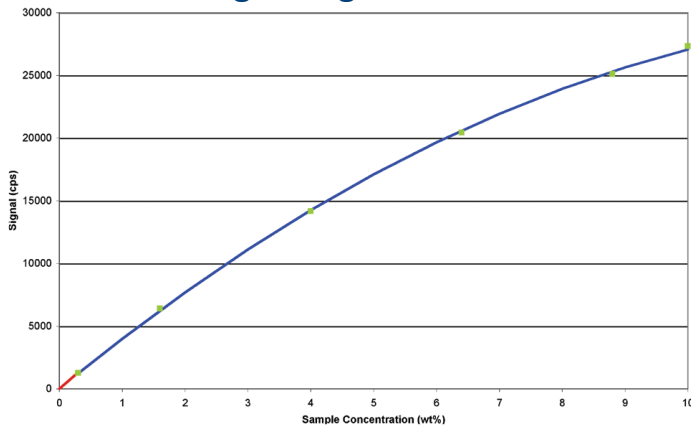
- 8 sample cell capacity
- Increases productivity
- Utilizes XOS Accucell sample cups



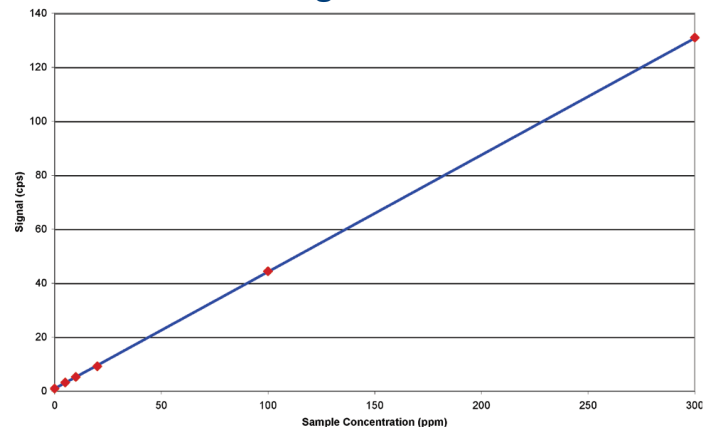
### ACCUCELL SAMPLE CUPS

- No assembly of separate film & cup components
- Pre-vented sample cups
- Eliminates contamination
- One discharge of 1 ml pipette will fill the cup

### High Range Calibration



### Low Range Calibration



## Product Specifications

<b>Model</b>	Sindie 7039 Gen 3
<b>Test Method</b>	ASTM D7039 and ISO 20884
<b>Dimensions</b>	37 cm (w) x 50 cm (d) x 34 cm (h)
<b>Power</b>	100-120 VAC, 47-63 HZ at 6.0 Amps/ 200-240 VAC, 47-63 HZ at 6.0 Amps
<b>Sample Cup Volume</b>	1 ml
<b>Ambient Temperature Requirements</b>	5-40° C (40-104° F)
<b>Dynamic Range</b>	Standard: 0.15 ppm - 3000 ppm Extended Range (XR): 0.3 wt% - 10 wt%
<b>Measurement</b>	User selectable: 30-900 s
<b>Calibration</b>	8 calibration curves. Automatic and manual calibration functionality

### Precision

Typical repeatability (r) and reproducibility (R) values in diesel fuel, at 95% confidence. 300 s measurement time.

Sulfur Concentration (ppm)	r	R
2	0.3	0.7
5	0.5	0.8
8	0.6	1.0
15	0.8	1.4
100	2	4
500	5	10



©XOS all rights reserved. Sindie and MWDXRF are registered trademarks of XOS.