

# Analyze Sulfur with Precision and Flexibility

Easier to use than ever, Sindie R2 provides the best value and combination of detection limits, measurement speed, ease of use and reliability and is the ideal sulfur analytical solution to help you stay in compliance with ASTM D2622, ASTM D7039, ISO 20884, and EN 16997 methods, enabling complete flexibility for your analytical needs.\*

## APPLICATIONS

- Petroleum Products (diesel, jet, kerosene, other distillate oil, naphtha, residual oil, lubricating base oil, hydraulic oil, crude oil, gasoline, gasoline-ethanol blend, coal and petroleum cokes).
- First and second-generation biofuels (biodiesel, ethanol, renewable diesel, HVO, SAF).
- (edible) oils and fats (UCO, Tallow, palm oil, corn oil, soybean oil etc.)
- Chemicals (toluene, xylene, methanol, benzene etc).
- Water

## FEATURES AND BENEFITS

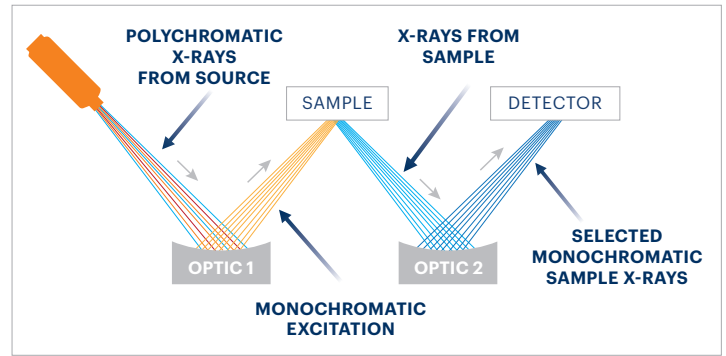
- **LOD:** 0.4 mg/kg (ppm) at 300s, 0.28 mg/kg (ppm) at 600s\*\*
- **Range:** 0.4mg/kg (ppm) to 10 wt%
- Easy to use
  - Intuitive 10-inch touch screen
  - Just plug in and measure
  - **Measurement time:** 10-999 s
- Low and high range available:
  - **Low range:** 0.4 mg/kg (ppm) – 3000 mg/kg (ppm)
  - **High range:** 0.3 wt% - 10 wt%
- Low maintenance: no gasses, heating elements, columns, or quartz tubing
- Traditional 43 mm XRF sample cups or XOS Accucells – decided at time of order
- Small footprint
- LIMS integration for data management and transfer
- Custom sample presets to save data entry time and minimize mistakes on common samples
- Bar code reader autofills sample name to reduce data entry time
- Storage capacity for more than 50,000 measurement results
- Supports up to 30 calibration curves
- USB connectivity in front and back for connecting to printer, keyboard, mouse, and memory stick
- Supports USB and network printers
- Large, easy-to-remove side panels for easy serviceability
- Advanced error reporting and diagnostics

16 32.06  
**Sindie** R2  
 Sulfur Analyzer

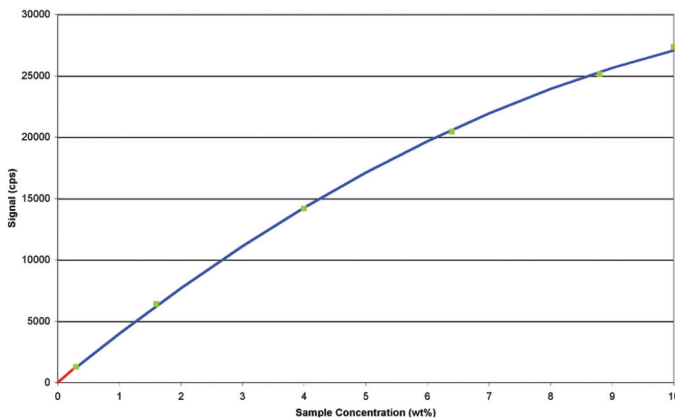


## TRUSTED PRECISION

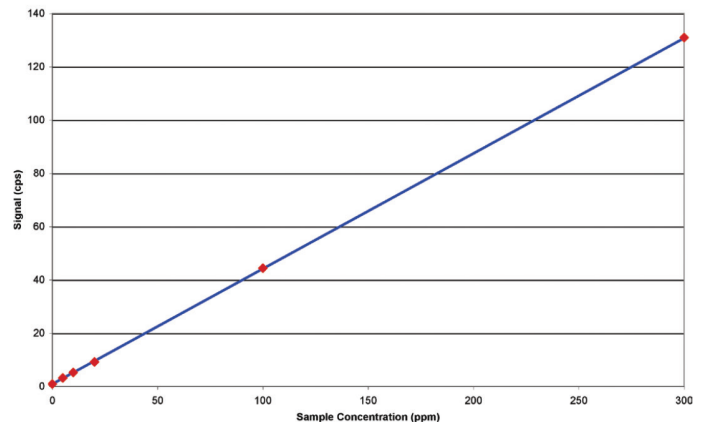
Monochromatic Wavelength Dispersive X-ray Fluorescence (MWDXRF<sup>®</sup>) utilizes state-of-the-art focusing and monochromating optics to increase excitation intensity and dramatically improve signal-to-background over high-power traditional WDXRF instruments. This enables significantly improved detection limits and precision, and a reduced sensitivity to matrix effects. A monochromatic and focused primary beam excites the sample, and secondary characteristic fluorescence X-rays are emitted from the sample. A second monochromating optic selects the sulfur characteristic X-rays and directs these X-rays to the detector. MWDXRF is a direct measurement technique and does not require consumable gasses or sample conversion.



### HIGH RANGE CALIBRATION



### LOW RANGE CALIBRATION



## PRODUCT SPECIFICATIONS

<b>Model</b>	Sindie R2
<b>Test Method</b>	ASTM D7039, D2622, ISO 20884 and EN 16997
<b>Dimensions</b>	42 cm (h) x 40 cm (w) x 54 cm (d) 16.5 in (h) x 15.8 in (w) x 21 in (d)
<b>Power</b>	100-120 VAC, 47-63 HZ at 5.0 Amps/ 200-240 VAC, 47-63 HZ at 2.5 Amps
<b>Minimum Sample Cup Volume</b>	Traditional - 5 mL, Accucells - 1mL
<b>Ambient Temperature Requirements</b>	5-40°C (40-104°F)
<b>Optical Path</b>	Vacuum
<b>Excitation Source</b>	75 W air-cooled

Examples of High and Low Range Calibration Curves on Sindie R2

\*All qualification herein are subject to user guide specifications. If you have further questions, reach out to our team of experts at [info@xos.com](mailto:info@xos.com).

\*\*Longer cycle time increases counts and lower LOD, but sample conditions over time must be considered. For further inquiries, please contact us at [info@xos.com](mailto:info@xos.com).

Sindie uses a weighted least squares regression in low range which is extremely linear and easy to set up. Typical correlation (R value) is expected to be on the order of 0.999 or better.

### PRECISION

Typical repeatability (r) and reproducibility (R) values in diesel fuel, at 95% confidence. 300 s measurement time.

Sulfur Concentration (ppm)	r	R
4	0.4	1.0
8	0.7	1.2
15	0.9	1.7
100	3	6
500	6	12

©XOS all rights reserved.

Sindie and MWDXRF are registered trademarks of XOS.