



GC 8500

GAS CHROMATOGRAPH

SCION Instruments combines Performance, Productivity and Flexibility with the ultimate user-experience into the 8500 Gas Chromatograph, the next generation of 456GC. This makes it the chromatographer's choice in GC.



Results with confidence, created with ease

SCION 8500 GC OFFERS THE MOST VERSATILE PLATFORM, DELIVERING SUPERIOR PERFORMANCE AND PRODUCTIVITY FOR ANY APPLICATION.

The 8500 GC is a true master in flexibility. With up to four channels of data, a full portfolio of detectors and inlets, nine EFC controls, the fastest oven in market, and a wide array of options for configuration sampling and valving, it allows for hitting the right performance and productivity levels for any type of analytical challenge.

The 8500 GC sets a new stage for operational use as well. The new, ultra large front mounted user interface now offers an unrivalled experience in the lab, making the journey to our results as convenient as possible.



Key Values



Flexibility

- Three channel architecture, with up to three inlets and four detectors (including MS)
- S/SL, PTV/LVI, COC, Packed/Wide bore, GSV/LSV inlets, with cooling options
- FID, TCD, ECD, PFPD, NPD, PDHID & MS Detectors
- Standard Analyser Packages
- Support for nine valves, 16 programmable events, heated (external) valve oven, Backflush/Deans, Gasifier or pressure station or Multi stream selection valves



Performance & Productivity

- Fastest Column Oven (180°C/min ramp)
- Advanced high-pressure EFC (150 Psi)
- Autosampler supported for enhanced productivity and best precision.
- 8400 Pro/8410 Pro Samplers with dual/duplicate, SPME and LVI injection modes
- Headspace, P&T, CTC, EST Sampler, Pyrolyzer Support
- Hydrogen carrier option
- Inert flow paths
- Constant linear velocity, Constant Flow and Constant pressure modes
- 600Hz data rate



Ease of Use

- 10" High resolution full-colour touchscreen
- 16 Languages supported: EnglishGB, EnglishUS, German, French, Italian, Dutch, Polish, Russian, Spanish, Portuguese, ChineseSC, ChineseTC, Korean, Thai, Vietnamese, Japanese
- CompassCDS™ Chromatography Data System for client server networked or stand-alone, 21CFR11 compliant
- CompassCDS™ Sample Streamer, IntelliUpdate, 1-Button Interface, and various plug-ins for dedicated industry-standard solutions



Productivity and Performance made easier



Intuitive User interface

SCION 8500 GC comes with a 10" full colour touchscreen user interface with superior visual quality.

The ultra large screen allows for superior overview to all instrument status, access to methods and automation. Changes can easily be made to methods or active settings on the fly (even when running), while at the instrument. Standard tablet-style swipe and scroll operations allow for moving through one analytical method or across methods in the same instrument conveniently, and changes made on screen are available for storing to method on CompassCDS.

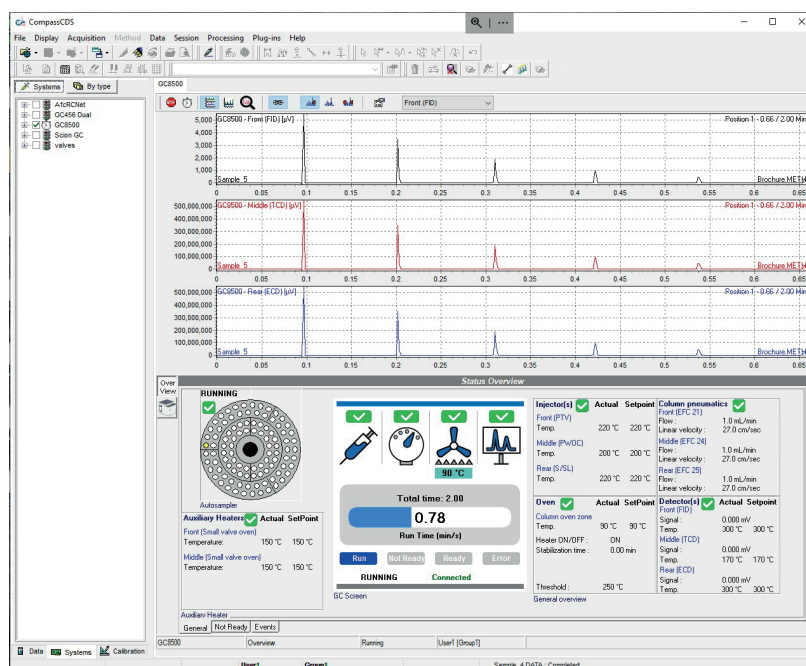
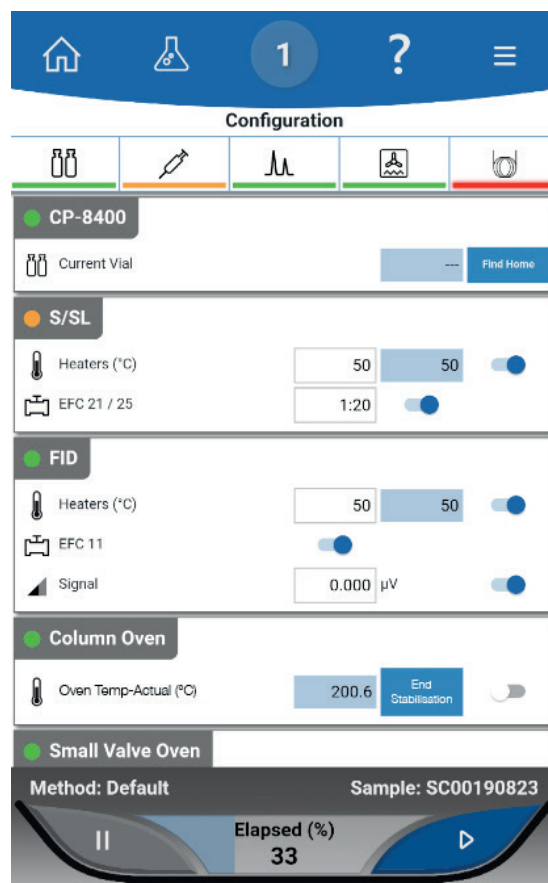
Because the screen has now been front-mounted, it also provides easier access to top-mounted inlet and detector positions for maintenance routines or reconfiguring, while still allowing an easy-to-read screen while doing these operations.



CompassCDS Software

The 8500 GC is supported in CompassCDS. CompassCDS is the easy-to-learn and easy-to-operate chromatography software that offers an intuitive interface, and a powerful package for integration, calibration, calculation and reporting tools. Market/solution-specific add-ons are available as well to further facilitate workflow and reporting.

CompassCDS supports control for a wide list of instruments, is fully scalable from stand-alone to client server solutions, and supports 21CFR11 compliance.





SCION 8500 Gas Chromatograph Options

MODULES

8400 PRO AUTOSAMPLER



8410 PRO AUTOSAMPLER



CTC AUTOSAMPLER



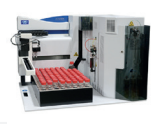
EST SAMPLER



HEADSPACE AUTOSAMPLER



PURGE & TRAP AUTOSAMPLER



GASIFIER



PRESSURE STATION



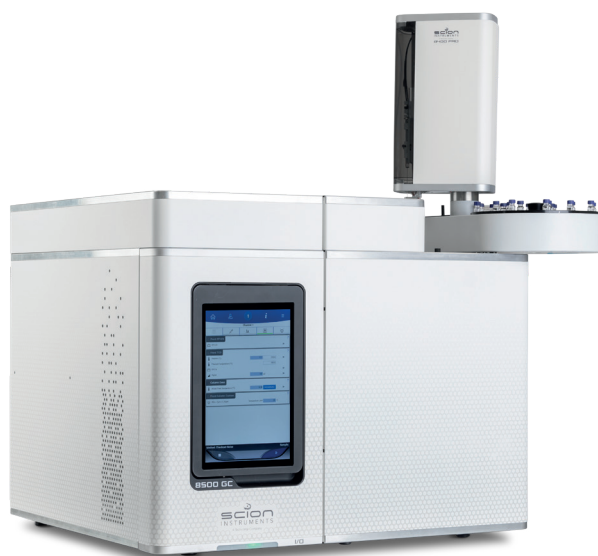
MULTISTREAM SELECTION VALVES



VALVE OVEN



H₂ SENSOR



8500 GC



Optional Autosamplers

FOR THE 8500 GC WE OFFER TWO TYPES OF SCION GC AUTOSAMPLERS.

Depending on the sample capacity needed for analysis there is a choice between the 8400Pro or 8410Pro. Both autosamplers have the capability for dual port injector access. Two samples can be injected into two injectors sequentially (dual mode) or one sample into two injectors sequentially (duplicate mode).

A wide range of syringes can be installed as well as SPME fibers. The tower is positioned next to the injection ports, this leads to minimal exposure to the hot surface of the injector port.

Maintenance can be done by removing the injector cover without removing the autosampler itself or the GC top cover.



8400 PRO

8410 PRO

Key Features

8400Pro AutoSampler

- Sample capacity: 100 x 2 mL vials
- Large solvent wash vial: 2 x 120 mL*
- Dual and duplicate mode
- Internal standard addition

Modes of Operation:

- Liquid
- Ambient headspace*
- SPME*
- Sample heating and cooling*
- Pre-programmed modes of injection

Syringes:

- 1 μ L, 2 μ L, 5 μ L, 10 μ L, 100 μ L, 250 μ L for liquid injection SPME
- *Optional

8410Pro AutoSampler

- Sample capacity:
10 x 2 mL vials
6 x 5 mL vials
5 x 10 mL vials
- Large solvent wash vial: 2 x 120 mL*
- Dual and duplicate mode
- Internal standard addition

Modes of Operation:

- Liquid
- Ambient headspace*
- SPME (Solid Phase MicroExtraction)*
- Sample heating and cooling*

Pre-programmed modes of injection Syringes :

- 1 μ L, 2 μ L, 5 μ L, 10 μ L, 100 μ L, 250 μ L for liquid injection SPME
- *Optional