



# CHROMATOGRAPHY SOLUTIONS

## PRODUCT OVERVIEW

SCION Instruments specialise in premium Gas and Liquid Chromatography solutions for research and industry.

This brochure will help you understand our product range and the benefits our instruments can offer your lab.



## Company Overview

### SCION INSTRUMENTS GAS & LIQUID CHROMATOGRAPHY SOLUTIONS HELP YOU BOOST PRODUCTIVITY AND GENERATE DATA CONFIDENTLY.

Built on the history of Chrompack and Varian in GC and GC-MS, SCION Instruments was acquired by the Techcomp group in 2014.

SCION Instruments designs, develops, supplies and supports GC, GC-MS, LC and Compass CDS (chromatography data system) product lines.

The company prides itself for manufacturing in Europe at its R&D facility in Livingston, Scotland and its headquarters in Goes, The Netherlands.

SCION Instruments maintains a global sales and service infrastructure around the world. As well as providing support for users of legacy Varian systems.



### A Techcomp Company

Founded in 1988, Techcomp Instruments Ltd is a laboratory instrumentation group headquartered in Hong Kong.

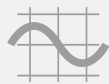
Techcomp engages in Development, Manufacture and Distribution of Scientific Instruments globally.

Our core technologies include Molecular Spectroscopy, Mass Spectroscopy, Chromatography and General Laboratory Instrumentation.

Techcomp Europe Ltd, based in the UK, comprises a group of European companies with operations dating back to 1920.

As well as SCION Instruments, the Group consists of Dynamica, Edinburgh Instruments, Edinburgh Sensors, Froilabo, Isotopx and Precisa.





## Gas Chromatography



### Model 8300 GC

- Compact footprint of only 32 cm (12.6") wide
- Fast ramp rate oven (170°C/minute)
- Two channel architecture, with up to 2 injection ports and 2 detectors (including MS)
- 10" High resolution full-colour touchscreen, 16 languages supported
- Electronic flow control (EFC), up to 3 EFC modules 0.001psi resolution
- Flexibility to add samplers, valves, valve oven and backflush capabilities.
- Programmed and controlled through CompassCDS



### Model 8500 GC

- Ultimate flexibility/configurability.
- Fast ramp rate oven (150°C/minute)
- Three channel architecture, with up to 3 injection ports and 4 detectors (including MS)
- 10" High resolution full-colour touchscreen, 16 languages supported
- Electronic Flow Control (EFC), up to 9 EFC modules at 0.001psi resolution.
- Flexibility to add samplers, valves, valve oven, backflush and column switching capabilities, etc.
- Programmed and controlled through CompassCDS



## Standard Analyser Solutions



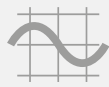
### Solutions

- Simulated Distillation
- Detailed Hydrocarbon Analyser
- Transformer Oil Gas Analyser
- Biodiesel
- Refinery gas & Natural Gas Analysers
- Beer analyser
- Greenhouse Gas Analyser



### Solution Features

- Designed, Tested and Documented
- Method compliance
- Application Guaranteed

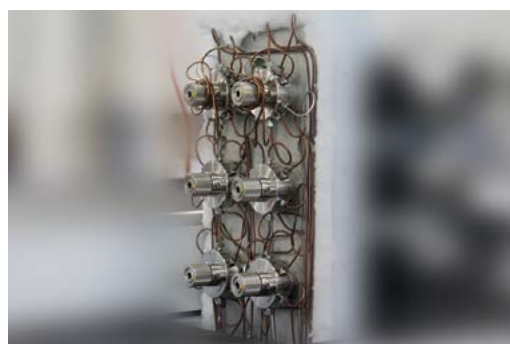


## Custom Solutions: Configured for your Application



### Capabilities that make a difference

- GC systems that are configured and tested for specific customer requirements
- Delivered with custom modification
- Complete performance test
- Multi Valve Oven for extra heated zones
- Unique Sample Pre-concentration Trap (SPT)
- Pulsed Flame Photometric Detector delivering part per trillion performance



## Sampling



### Both variants offer...

- Dual injector access
- Dual or duplicate injection capability
- Three solvent wash
- Sample tray heating or cooling
- Large solvent vial, Flowcell, SPME options
- Off axis to injector (maintains sample integrity)
- Internal standard addition



### 8400PRO Autosampler

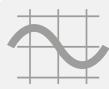
- Capacity = 100 x 2mL vials
- Wide variety of syringes



### 8410PRO Auto-injector

- Capacity = 10 x 2mL + 6 x 5mL + 5 x 10mL vials
- Flow-through cell for continuous sampling
- Maximum flexibility in vial size





## Headspace



### Versa Static Automated Headspace Vial Sampler

- Small on size but big on value. Only 30,48 cm wide
- 20-position autosampler/single position platen oven
- 22mL vials
- Sample heating to 200°C throughout pathway
- Built-in pressure control to ensure consistent volume for all samples regardless of external conditions
- Inert sample pathway including transfer line, sample needle, and loop provides superior analytical results by eliminating adsorption and reducing carryover
- Automatic leak check and Benchmark test for quick troubleshooting
- Simple method development using Method Optimization Mode (M.O.M.)
- Versa TekLink™ 2G software for use as standard or full 21 CFR compliance



### HT3 Static and Dynamic Headspace System

- Standard integrated 60-position autosampler with 10-position platen heater provides true walk away automation
- Increased sensitivity from 50 to 100 times with the Dynamic Headspace option (compound dependent)
- Removable sample path for trouble-free maintenance
- High temperature capability expands range of applications
- Inert sample pathway including transfer line, sample needle and loop provides superior analytical results by eliminating adsorption and reducing carryover
- Automated Leak Check and Benchmark for quick troubleshooting
- Automated method development using Method Optimization Mode (M.O.M.)
- 21 CFR Compliance
- Built-in Mass Flow Controller ensures consistent flow and pressure for all samples regardless of external conditions





## Mass Spectrometry



### Model 8700 SQ GC-MS

- Lens free analyser ion path
- Off Axis ion source and detector increase sensitivity
- Active focusing  $Q_0$  pre-filter
- Full automation capabilities



### Specifications & Features

- Available with EI or CI ion source
- Mass range (m/z) 1 to 1200 Da
- Scan rate up to 20,000 Da/s
- Mass resolution of 0.7-4 Da with mass stability of 0.1 Da over 48h
- High-performance turbo pump for rapid time to vacuum
- Dual filament source increases uptime
- Extended Dynamic Range (EDR)  $>10^5$  range
- Easy access maintenance



### Model 8900 TQ GC-MS

- Innovative Lens free analyser ion path
- Off Axis ion source and detector increase sensitivity
- Active focusing  $Q_0$  pre-filter
- Full automation capabilities



### Specifications & Features

- Available with EI ion source
- Mass range (m/z) 1 to 1200 Da
- Scan rate up to 30,000 Da/s
- Mass resolution of 0.7-4 Da with mass stability of 0.1 Da over 48h
- MRM speed (1000 MRM/s)
- High-performance turbo pump for rapid time to vacuum
- Dual filament source increases uptime
- Six orders of magnitude Extended Dynamic Range (EDR)
- Easy access maintenance





# High Performance Liquid Chromatography



## SCION LC6000

- Extra-large Solvent Cabinet
- High Pressure Quaternary Pump (600 bar)
- 200 position Autosampler (2mL vials)
- Column Oven with Peltier heating and cooling up to 85°C
- Six-channel Degassing Unit
- Full portfolio of detectors (DAD, UV, RI, FL)
- Controlled by CompassCDS



## Solution Features

- Superior retention time stability
- Excellent flow rate precision
- Ultra-low carry over (<0.003% RSD)



## CompassCDS



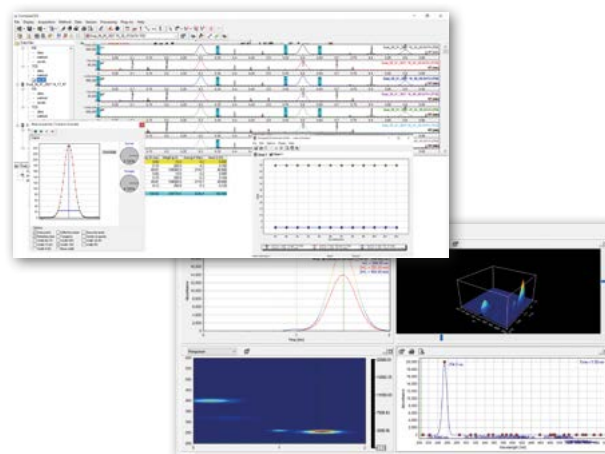
## Industry Proven

CompassCDS is an industry-proven, powerful and operator friendly networked chromatography data system software solution developed throughout the last 20 years according to requirements of our customer base. With its intuitive, easy-to-use and application and information-rich user interface and its unique capacity for customization, CompassCDS provides operators with a powerful tool for a variety of operations in different analytical fields.



## Simply Powerful!

- Application-rich, configurable and intuitive UI
- Multi-vendor GC & LC instrument control
- Application specific tools - *1-Button interface, ChromSync, Sample Streamer, Eclipse DHA/SIMDIS*
- Unreached integration engine performance and precision
- Comprehensive calibration, calculation and reporting tools
- Centralised system administration and data management
- Robust design for 24/7 operations
- Scalable; from workstation to enterprise-wide C/S installations
- Complies to 21CFR11, ISO EN 17025







## Spares and Consumables

Download our Spares and Consumables Brochure using the QR Code

Try our Columns, Filters, Ferrules, Septa, Liners, Vials etc.



For research use only. Not for use in diagnostic procedures. ©Scion Instruments 2022  
Stage 07 / 09.22

P.O. Box 1128  
Granger, IN 46530

 Lazar Scientific, Inc.

574-271-7020  
sales@lazarsci.com  
www.lazarsci.com

