



# LC 6000

## HIGH PERFORMANCE LIQUID CHROMATOGRAPH

SCION Instruments brings Performance, Functionality and Reliability together into its impressive 6000 Series HPLC product line up, making it the chromatographer's choice in HPLC.



# Outstanding Performance for Confident Results

## THE SCION 6000 SERIES HPLC AIMS FOR CONFIDENCE IN RESULTS THROUGH OUTSTANDING LIFE-TIME PERFORMANCE.

A robust design maximises uptime and productivity levels whilst minimises cost of operation.

The SCION 6000 Series offers an array of automation options for workflow optimisation, making our lab experience the best and easiest possible.



## Key Values



### Superior gradient performance and excellent flow rate precision

The SCION 6100 Quaternary pump has a new low-pressure mode called High Frequency Mode (HFM), which utilises a double switching function of proportioning valves. HFM with the high-speed real-time feedback control system greatly suppresses liquid pulsation for superior reproducibility of gradient and retention times.



### Excellent injection volume precision and ultra-low carry-over

The newly adopted high-precision syringe drive unit provides excellent injection volume precision. Dead volume in the SCION 6210 Autosampler flow path has been minimised. Syringe washing protocols, and stringent temperature control has resulted in a superior precision autosampler with extremely low carry-over.



### Best Chromatography

The SCION 6310/6320 Column Oven delivers accurate Peltier-based heating cooling profiles, delivering sharp peaks with excellent peak symmetry. The column oven accommodates three 300 mm ID-tagged analytical columns fitted with a guard-column.



### Excellent Detector Performance

The 6000 Series HPLC line-up comes with a portfolio of detectors including UV, DAD, Fluorescence and Refractive Index, all designed for stability, precision and sensitivity.

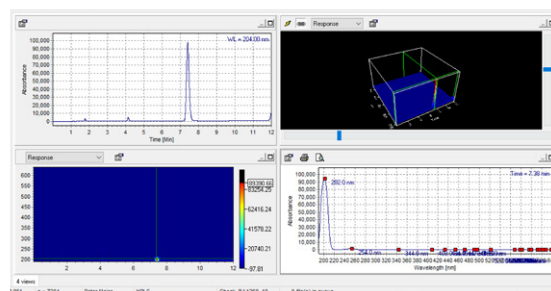


# Reliability & Efficiency in one solution



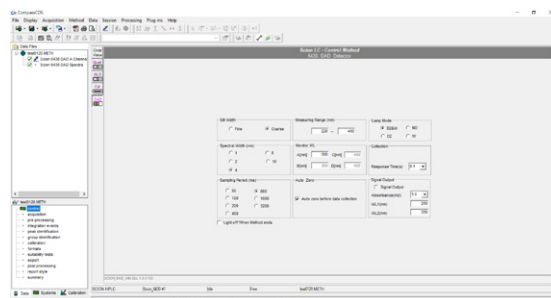
## Instrument robustness

SCION 6000 Series HPLC is made for robustness and best return on investment (ROI). Covers are made of heat-resistant, chemical-tolerant, and UV irradiation-withstanding materials. The internal walls of the modules are made with corrosion resistant material to cope with humidity and vaporisation of solvents. The column oven incorporates a solvent leak sensor and a gas sensor to spot leaks. A door lock mechanism and auto power-off/function-on lamp replacement further add to robustness.



## Compass CDS Control

The SCION 6000 Series HPLC offers complete support through CompassCDS, adding full instrument control & automation, a complete suite of integration, calibration and reporting tools, and allowing for full 21CFR11 compliance.



## Low volume Degassing options

To avoid any salt precipitation from the mobile phase, the SCION 6000 Series HPLC includes an auto plunger washing mechanism that prevents damage to the pump seal or the plunger. The low-volume degassing unit reduces solvent purging time and reduces the amount of solvent used.



## Extra Large Solvent cabinet

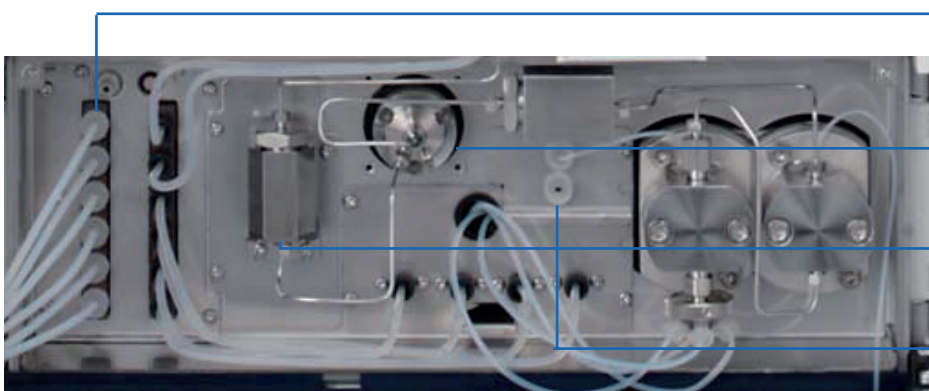
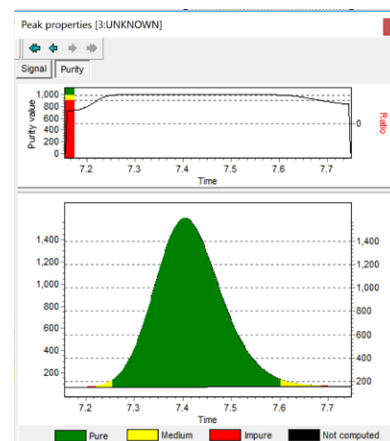
The SCION 6510 Organiser is designed for multiple-liquid operation and can hold different bottle sizes to accommodate these typical applications.



## Manual Injection Valve

For educational purposes, or low throughput applications a manual injection port can be added to the 6000 Series instead of the 6210/6220 Autosampler.

A manual valve ensures great repeatability for situations where a single good result is needed.



Six-channel degassing unit (480 µL/ch) (optional)

Auto-purge valve (Pumps with or without Auto-purge valve are available)

Conventional mixer (Accessory of the low-pressure gradient unit option)

Plunger washing pump (optional)



## SCION 6000 Series HPLC Configuration Modules

6510 ORGANISER (SOLVENT CABINET)

6100 QUATERNARY PUMP

6210 AUTOSAMPLER  
6220 AUTOSAMPLER WITH COOLING UNIT

6310 COLUMN OVEN WITH PELTIER

6410 ULTRAVIOLET DETECTOR  
6430 DIODE ARRAY DETECTOR  
6440 FLUORESCENCE DETECTOR  
6450 REFRACTIVE INDEX DETECTOR



LC6000

For research use only. Not for use in diagnostic procedures. ©SCION Instruments 2020

P.O. Box 1128  
Granger, IN 46530



Lazar Scientific, Inc.

574-271-7020  
sales@lazarsci.com  
www.lazarsci.com

